



BRIGADE
Building Positive Experiences

A LIMITED EDITION
LIFESTYLE

Premium homes in North Bangalore

BRIGADE
CALADIUM
HEBBAL

BrigadeCaladium.com

WELCOME TO BRIGADE CALADIUM

At Brigade Caladium, the sublime luxury that greets you on arrival prevails throughout the property. The smooth curves of the building derive inspiration from a droplet of water - the source of life. Set amidst exquisite landscaping Brigade Caladium is the definitive answer to a lifestyle quest. These 3 & 4-bedroom residences range from 321 to 413 square metres. All residents have access to the rooftop swimming pool, lounge deck and fitness centre.

Master plan



LEGEND

Terrace Amenities

- A Swimming Pool
- B Kid's Pool
- C Pool Deck
- D Gym Spill Over
- E Party Terrace
- F Pavilion
- G Party Hall Spill Over

Ground Floor Features

- 1 Drop Off Plaza
- 2 Walkway
- 3 Driveway
- 4 Parking
- 5 Waterbody
- 6 Lobby Frontage Plaza
- 7 Basket Ball Dunking Court
- 8 Pavilion
- 9 Reflexology Walkway
- 10 Senior Citizen's Area
- 11 Children's Play Area
- 12 Nanny's Pavilion
- 13 Gas Bank
- 14 Organic Waste Converter
- 15 Transformer Yard
- 16 Security Cabin

The information depicted herein viz., master plans, floor plans, furniture layout, fittings, illustrations, specifications, designs, dimensions, rendered views, colours, amenities and facilities etc., are subject to change without notifications as may be required by the relevant authorities or the developer's architect, and cannot form part of an offer or contract. Whilst every care is taken in providing this information, the Developer cannot be held liable for variations. All illustrations and pictures are artist's impression only. The information are subject to variations, additions, deletions, substitutions and modifications as may be recommended by the company's architect and/or the relevant approving authorities. The Developer is wholly exempt from any liability on account of any claim in this regard. (1 square metre = 10.764 square feet). E & OE.



A MASTERPIECE TO LOOK AT. A MARVEL TO LIVE IN.

Limited edition residences reserved for those who choose only between the finest and the finest.

RAISE A TOAST TO THE GOOD LIFE

Brigade Caladium is located in Hebbal, Bangalore's high potential growth corridor. Located just off Airport Road, Brigade Caladium scores high on accessibility and yet enjoys unparalleled privacy. Well-connected to the Central Business District, Brigade Caladium is a premium living space with easy accessibility to the airport, international schools, hotels, premium healthcare, shopping destinations and more.



30 min drive from
International Airport,
CBD & KR Puram



Close proximity
to Manyata &
Kirkoskar Tech Parks



Close to Hebbal Lake,
Nagavara Lake,
Malls, Star Hotels



Adjacent to Columbia Asia
Hospital, close to Baptist
and Ramaiah Hospitals



Minutes away from reputed
schools like Vidyashilp,
Mallya Aditi, Stonehill, DPS & NPS

**SPECIAL
FEATURES**



ROOFTOP
INFINITY POOL



FITNESS
CENTRE



60 LIMITED EDITION
PREMIUM RESIDENCES



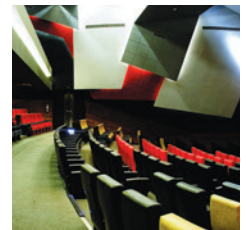
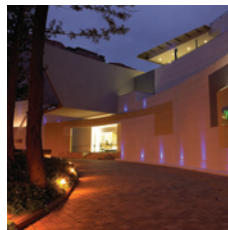
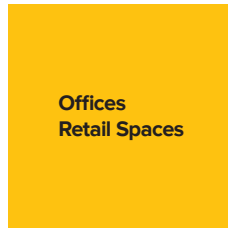
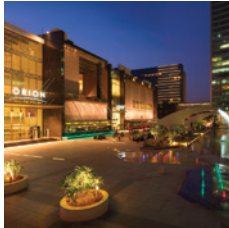
MULTIPLE DOMAINS. SINGLE-MINDED COMMITMENT.

Brigade is one of India's leading developers with over three decades of expertise in building positive experiences for all our stakeholders. We have transformed the city skylines of Bangalore, Mysore, Hyderabad, Chennai, Mangalore, Chikmagalur and Kochi with developments across residential, offices, retail, hospitality and education sectors.

Our residential portfolio includes penthouses, villas, premium residences, luxury apartments, value homes, retirement homes and award-winning fully integrated lifestyle enclaves across a wide budget range. We are among the few developers who have built a reputation of developing well-planned Grade A commercial properties.

Since our inception in 1986, we have completed nearly 200 buildings amounting to over 30 million square feet across residential, offices, retail and hospitality sectors. Over the next five years, we will be developing 30 million square feet across seven cities.

We take pride in not just being a developer of quality spaces, but an employer of highest standards. In addition to our numerous awards for our projects, we have been consistently recognised, for being amongst the best employers in the real estate and construction sector in the country, for the past 7 years by the Great Places to Work Institute.



AWARDS AND ACCOLADES

Great Place To Work 2017 - Brigade has been recognised for being amongst the best employers in the Construction and Real Estate industry

Brigade Group - Won the 'Integrated Township of the Year'- South and 'Developer of the Year' - Mixed Use at the Estate Awards - 2017

Received 'India's Top Builders 2016' Award at the CWAB Awards

Won the 'Developer of the Year' - Commercial, for Nalapad Brigade Centre at the Realty Plus Excellence Awards (South) - 2016

Brigade Orchards - Won the 'Order of Merit' Award at the Business World Smart Cities Conclave and Awards - 2017

Aspen at Brigade Orchards, won the ICI (BC) - Birla Super Jury Appreciation Award for Outstanding Concrete Structure of Karnataka 2016 in the Building Category

Brigade Cosmopolis - Won the 'Best Residential Project in Bangalore in the Luxury Segment' Award at the 11th CNBC Awaaz Awards - 2016

Brigade Exotica - Received the 'Best Design Apartment Project of the Year' - East Bangalore Award at the SiliconIndia Bangalore Real Estate Awards - 2016

Brigade at No.7 - Won the 'Best Residential project in Hyderabad in the Ultra Luxury Segment' at the 11th CNBC Awaaz Awards - 2016

Brigade Palmgrove, Mysuru - Won in the 'Villas & Row Houses' category at the CREDAI Karnataka's CARE Awards - 2017

Orion Mall at Brigade Gateway - Won the 'Retail Property of the Year'- South at the Estate Awards - 2017

Orion East Mall - Won in the 'Shopping Malls' category at the CREDAI Karnataka's CARE Awards - 2017



To UPGRADE TO BRIGADE, reach us on 1800 102 9977 | email: salesenquiry@brigadegroup.com

Marketing Office: Brigade Caladium, Dasarahalli Main Road, Hebbal, Bangalore.

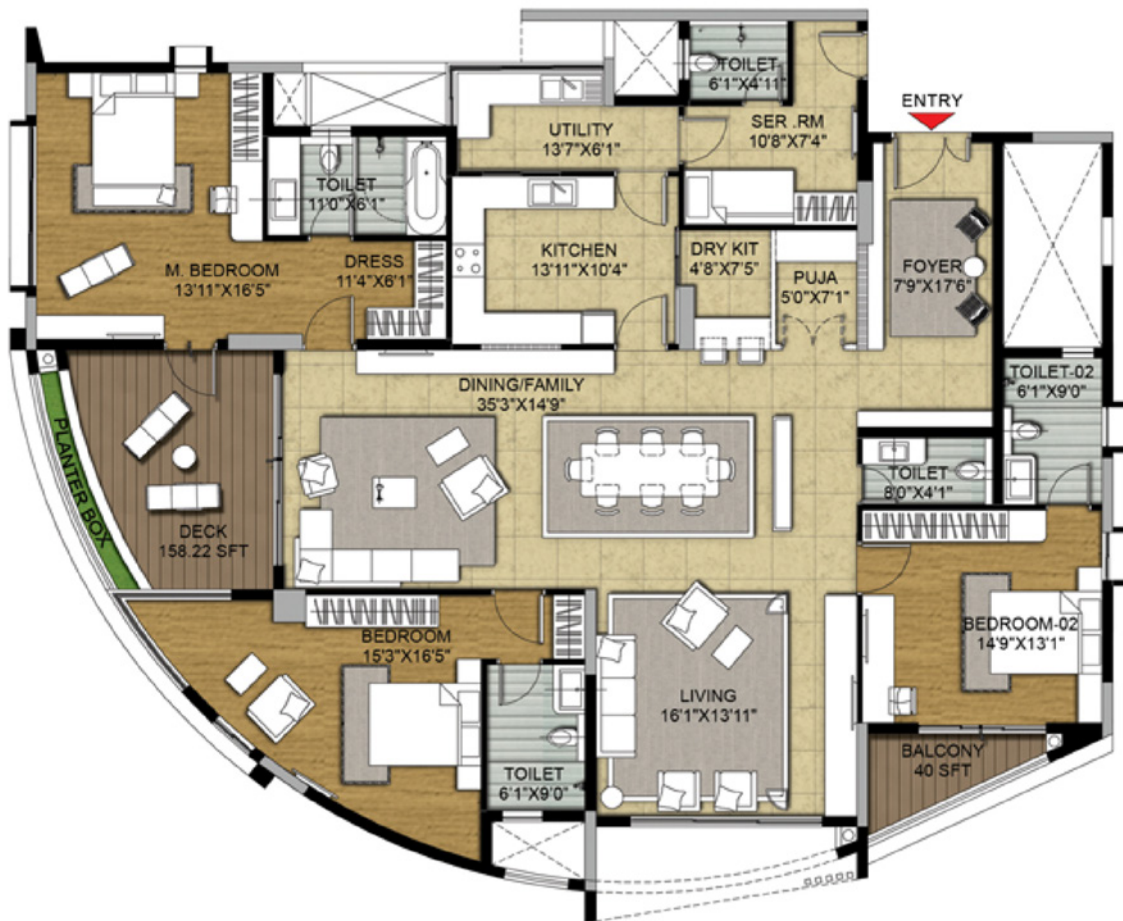
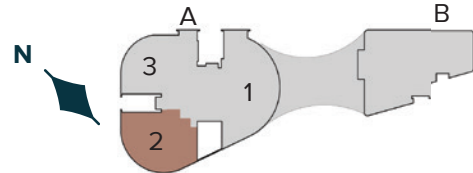
Also visit us at Experience Centre: Ground Level, World Trade Center, Brigade Gateway Campus, Dr. Rajkumar Road, Malleswaram-Rajajinagar, Bangalore.

TYPICAL UNIT PLAN

3-Bedroom Unit

BRIGADE
CALADIUM
HEBBAL

KEY PLAN



SUPER BUILT-UP AREA	CARPET AREA	TYPICAL UNIT NUMBERS
3450 Sq.ft. / 320.52 Sq.m.	2348 Sq.ft. / 218.13 Sq.m.	A-202, 802

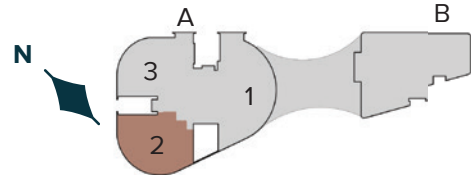
The information depicted herein viz., master plans, floor plans, furniture layout, fittings, illustrations, specifications, designs, dimensions, rendered views, colours, amenities and facilities etc., are subject to change without notifications as may be required by the relevant authorities or the developer's architect, and cannot form part of an offer or contract. Whilst every care is taken in providing this information, the Developer cannot be held liable for variations. All illustrations and pictures are artist's impression only. The information are subject to variations, additions, deletions, substitutions and modifications as may be recommended by the company's architect and/or the relevant approving authorities. The Developer is wholly exempt from any liability on account of any claim in this regard. (1 square metre = 10.764 square feet). E & OE.

TYPICAL UNIT PLAN

3-Bedroom Unit

BRIGADE
CALADIUM
HERBAL

KEY PLAN



SUPER BUILT-UP AREA	CARPET AREA	TYPICAL UNIT NUMBERS
3520 Sq.ft. / 327.02 Sq.m.	2337 Sq.ft. / 217.15 Sq.m.	A-302, 402, 502, 602, 702, 902, 1002 & 1102

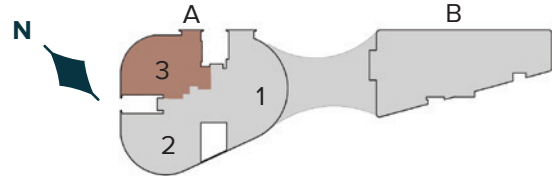
The information depicted herein viz., master plans, floor plans, furniture layout, fittings, illustrations, specifications, designs, dimensions, rendered views, colours, amenities and facilities etc., are subject to change without notifications as may be required by the relevant authorities or the developer's architect, and cannot form part of an offer or contract. Whilst every care is taken in providing this information, the Developer cannot be held liable for variations. All illustrations and pictures are artist's impression only. The information are subject to variations, additions, deletions, substitutions and modifications as may be recommended by the company's architect and/or the relevant approving authorities. The Developer is wholly exempt from any liability on account of any claim in this regard. (1 square metre = 10.764 square feet). E & OE.

TYPICAL UNIT PLAN

4-Bedroom Unit

BRIGADE
CALADIUM
HERBAL

KEY PLAN



SUPER BUILT-UP AREA	CARPET AREA	TYPICAL UNIT NUMBERS
4000 Sq.ft. / 371.61 Sq.m.	2750 Sq.ft. / 255.47 Sq.m.	A-203, 303, 403, 503, 603, 703, 803, 903, 1003, 1103 & 1203

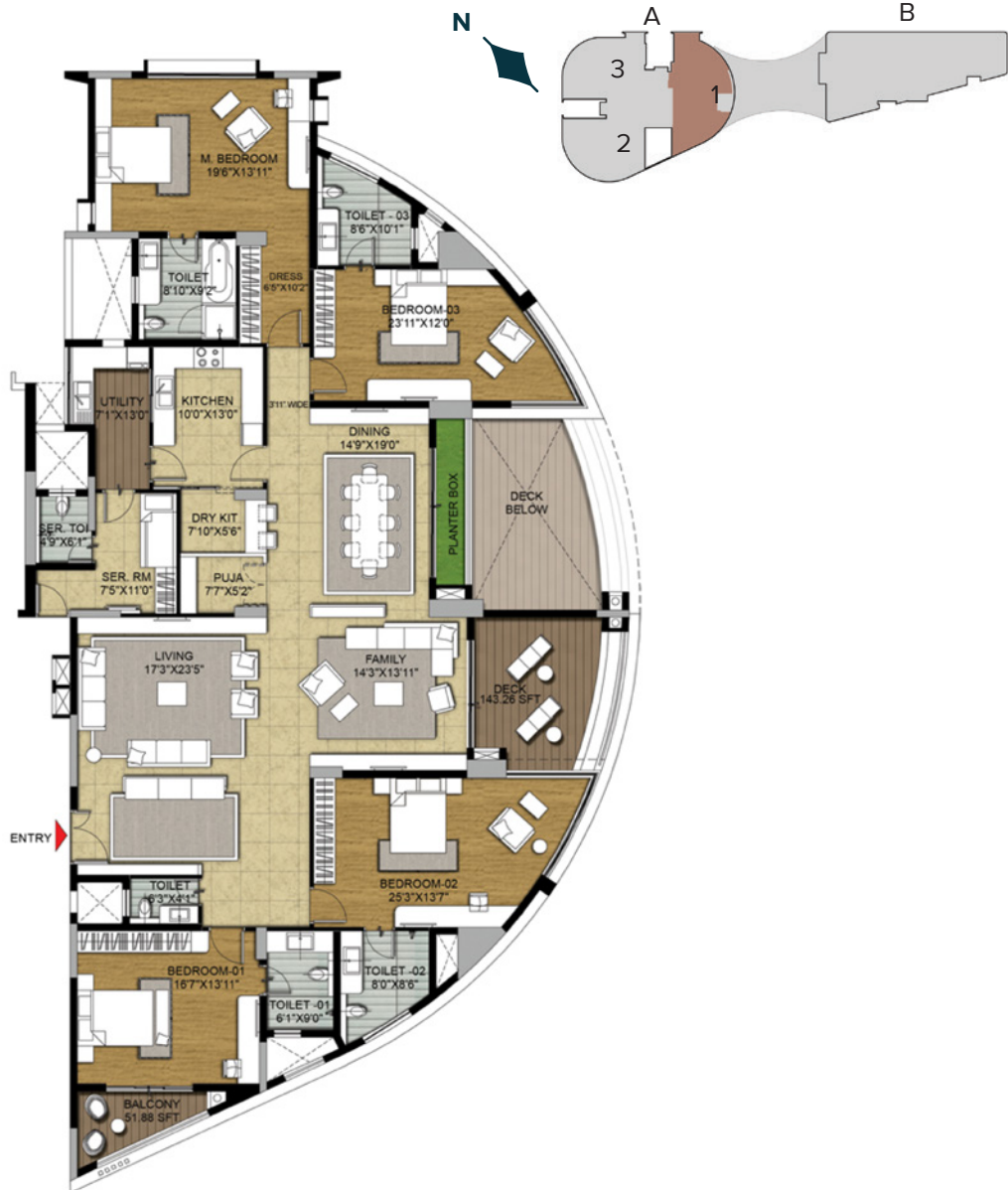
The information depicted herein viz., master plans, floor plans, furniture layout, fittings, illustrations, specifications, designs, dimensions, rendered views, colours, amenities and facilities etc., are subject to change without notifications as may be required by the relevant authorities or the developer's architect, and cannot form part of an offer or contract. Whilst every care is taken in providing this information, the Developer cannot be held liable for variations. All illustrations and pictures are artist's impression only. The information are subject to variations, additions, deletions, substitutions and modifications as may be recommended by the company's architect and/or the relevant approving authorities. The Developer is wholly exempt from any liability on account of any claim in this regard. (1 square metre = 10.764 square feet). E & OE.

TYPICAL UNIT PLAN

4-Bedroom Unit

BRIGADE
CALADIUM
HEBBAL

KEY PLAN



SUPER BUILT-UP AREA	CARPET AREA	TYPICAL UNIT NUMBERS
4310 Sq.ft. / 400.41 Sq.m.	2987 Sq.ft. / 277.47 Sq.m.	A-301, 501, 701, 901 & 1101

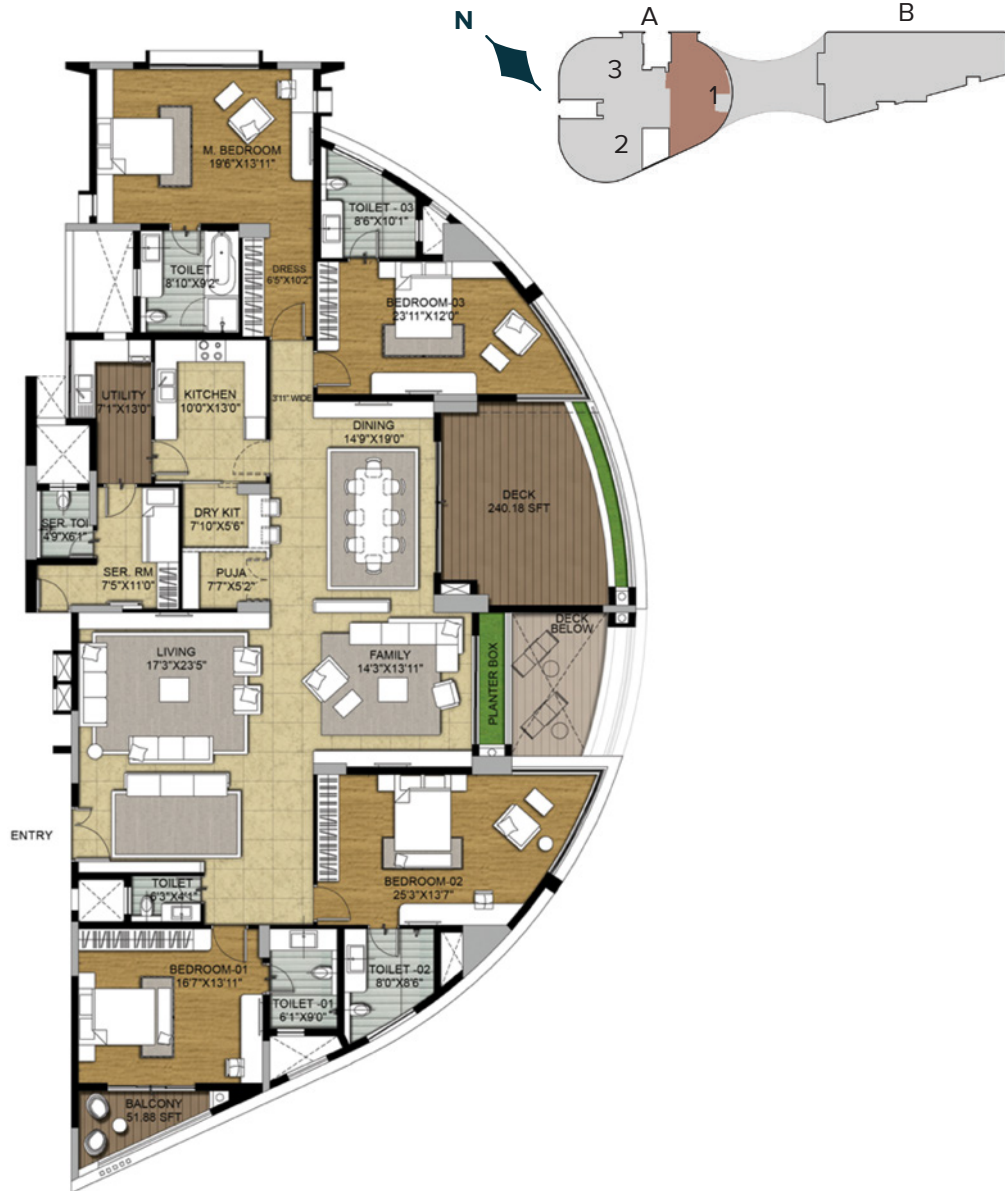
The information depicted herein viz., master plans, floor plans, furniture layout, fittings, illustrations, specifications, designs, dimensions, rendered views, colours, amenities and facilities etc., are subject to change without notifications as may be required by the relevant authorities or the developer's architect, and cannot form part of an offer or contract. Whilst every care is taken in providing this information, the Developer cannot be held liable for variations. All illustrations and pictures are artist's impression only. The information are subject to variations, additions, deletions, substitutions and modifications as may be recommended by the company's architect and/or the relevant approving authorities. The Developer is wholly exempt from any liability on account of any claim in this regard. (1 square metre = 10.764 square feet). E & OE.

TYPICAL UNIT PLAN

4-Bedroom Unit

BRIGADE
CALADIUM
HEBBAL

KEY PLAN



SUPER BUILT-UP AREA	CARPET AREA	TYPICAL UNIT NUMBERS
4450 Sq.ft. / 413.42 Sq.m.	2987 Sq.ft. / 277.48 Sq.m.	A-401, 601, 801, 1001 & 1201

The information depicted herein viz., master plans, floor plans, furniture layout, fittings, illustrations, specifications, designs, dimensions, rendered views, colours, amenities and facilities etc., are subject to change without notifications as may be required by the relevant authorities or the developer's architect, and cannot form part of an offer or contract. Whilst every care is taken in providing this information, the Developer cannot be held liable for variations. All illustrations and pictures are artist's impression only. The information are subject to variations, additions, deletions, substitutions and modifications as may be recommended by the company's architect and/or the relevant approving authorities. The Developer is wholly exempt from any liability on account of any claim in this regard. (1 square metre = 10.764 square feet). E & OE.

SPECIFICATIONS



COMMON AREAS

Waiting Lounge / Reception / Lift Lobby:
Imported marble flooring

RESIDENCES

Living / Dining / Family Lounge:
Imported marble flooring

MASTER BEDROOM

Hardwood flooring
Other Bedrooms: Vitrified tiles

KITCHEN

Vitrified tile flooring
Designer modular kitchen
Provision for water heater, water purifier,
microwave and dishwasher

BALCONY / DECK

Vitrified tiles with wood look finish

BATHROOMS

Imported marble flooring for master bathroom
Designer vitrified tile flooring for other bathrooms
CP & Sanitary Fittings - Kohler / Roca /
Bathline or equivalent
Accessories - Jaquar / Roca or equivalent
Bathtub in master bedroom - Kohler / Roca /
Bathline or equivalent

UTILITY

Vitrified tile flooring
Provision for washing machine and dishwasher

DOORS & WINDOWS

Apartment main door in teakwood and jamb with
teakwood shutter
Bedroom doors in lacquered PU finished solid
wood frame, architrave and shutter with masonite

skin solid core on both sides

WINDOWS

Aluminium / UPVC with glazing
(Domal or equivalent)

PAINT

Long lasting textured paint for exteriors
Acrylic emulsion paint for internal ceilings & walls

AIR-CONDITIONING

Provision for split AC in living, dining
and bedrooms

POWER SUPPLY

3-bedroom apartment: 8 kW

4-bedroom apartment: 10 kW

STAND-BY POWER

100% emergency power for lifts, pumps and
lighting in common areas

3-bedroom apartment: 5 kW

4-bedroom apartment: 6 kW

LIFTS

Block A - 2 passenger lifts and 1 service lift
Block B - 1 passenger lift and 1 service lift

SECURITY SYSTEMS & AUTOMATION

Provision for basic home automation conduiting
(lights, security, air-conditioning and video
door phone)