



BRIGADE
Building Positive Experiences

Crimson Block
OC Received

HOMES NEXT ~~~~~
to a redeveloped lake!

Premium Homes in East Bangalore

BRIGADE
LakeFront
EPIP, WHITEFIELD


BrigadeLakeFront.com




THE WALK *of life* ~~~


Walk into the new way of life at Brigade LakeFront. With a lake on one side and lush greenscapes all around, your world brims with peace and tranquility. Here, you will find everything you need, just a short walk away from your home. Rediscover the joy of walking at Brigade LakeFront.




 Senior citizen's court

 Water features

 Children's play area

 Clubhouse
4181 Sq.m. (45,000 Sq.ft.)

 Fitness court

 Yoga deck



AN ENVIABLE *lifestyle*

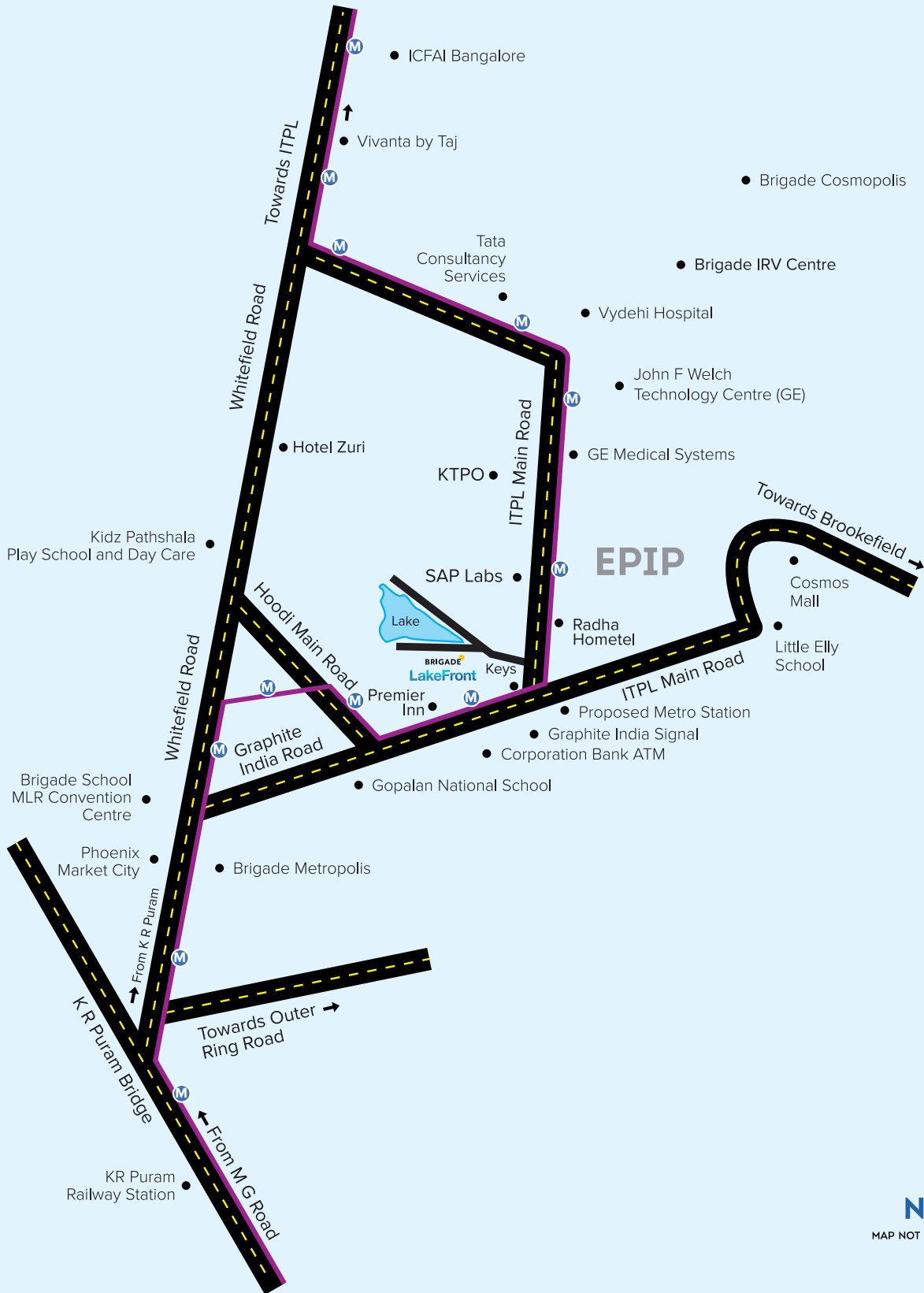
Take your pick from a wide range of recreational amenities at the state-of-the-art clubhouse or enjoy an array of outdoor sporting facilities. Discover a lifestyle of health and happiness at Brigade LakeFront.

MASTER PLAN



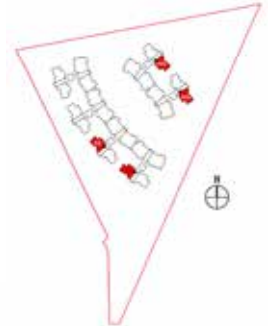
LOCATION ADVANTAGE

Whitefield, one of the most sought-after localities in Bangalore boasts not only of lush greenery and good social infrastructure, but also malls, educational institutions and hospitals. This locality also enjoys excellent connectivity to MG Road, Outer Ring Road and major parts of Bangalore and with the upcoming Metro Rail, commute is set to become all the more easier.



CRIMSON BLOCK
2-BEDROOM UNIT - TYPE 1
 2 Bedrooms + 2 Bathrooms

KEY PLAN



SUPER BUILT-UP AREA

1,174 Sq.ft. / 109.09 Sq.m.

CARPET AREA

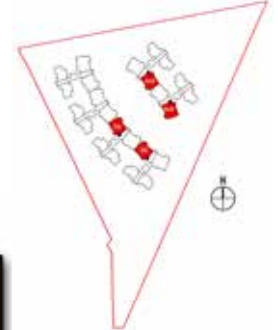
786 Sq.ft. / 73.06 Sq.m.

The information depicted herein viz., master plans, floor plans, furniture layout, fittings, illustrations, specifications, designs, dimensions, rendered views, colours, amenities and facilities etc., are subject to change without notifications as may be required by the relevant authorities or the developer's architect, and cannot form part of an offer or contract. Whilst every care is taken in providing this information, the Developer cannot be held liable for variations. All illustrations and pictures are artist's impression only. The information are subject to variations, additions, deletions, substitutions and modifications as may be recommended by the company's architect and/or the relevant approving authorities. The Developer is wholly exempt from any liability on account of any claim in this regard. (1 square metre = 10.764 square feet). E & OE.

CRIMSON BLOCK 3-BEDROOM UNIT - TYPE 2

3 Bedrooms + 3 Bathrooms

KEY PLAN



SUPER BUILT-UP AREA

1,687 Sq.ft. / 157 Sq.m.

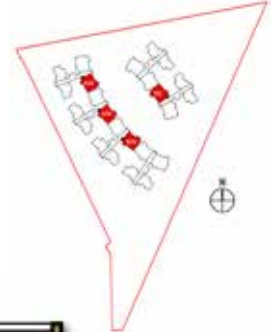
CARPET AREA

1,115 Sq.ft. / 103.56 Sq.m.

The information depicted herein viz., master plans, floor plans, furniture layout, fittings, illustrations, specifications, designs, dimensions, rendered views, colours, amenities and facilities etc., are subject to change without notifications as may be required by the relevant authorities or the developer's architect, and cannot form part of an offer or contract. Whilst every care is taken in providing this information, the Developer cannot be held liable for variations. All illustrations and pictures are artist's impression only. The information are subject to variations, additions, deletions, substitutions and modifications as may be recommended by the company's architect and/or the relevant approving authorities. The Developer is wholly exempt from any liability on account of any claim in this regard. (1 square metre = 10.764 square feet). E & OE.

CRIMSON BLOCK
3-BEDROOM UNIT - TYPE 4
 3 Bedrooms + 3 Bathrooms

KEY PLAN



SUPER BUILT-UP AREA

1,714 Sq.ft. / 159.22 Sq.m.

CARPET AREA

1,180 Sq.ft. / 109.66 Sq.m.

The information depicted herein viz., master plans, floor plans, furniture layout, fittings, illustrations, specifications, designs, dimensions, rendered views, colours, amenities and facilities etc., are subject to change without notifications as may be required by the relevant authorities or the developer's architect, and cannot form part of an offer or contract. Whilst every care is taken in providing this information, the Developer cannot be held liable for variations. All illustrations and pictures are artist's impression only. The information are subject to variations, additions, deletions, substitutions and modifications as may be recommended by the company's architect and/or the relevant approving authorities. The Developer is wholly exempt from any liability on account of any claim in this regard. (1 square metre = 10.764 square feet). E & OE.



SPECIFICATIONS

COMMON AREAS - FLOORING

Waiting Lounge / Reception: Imported marble flooring / granite flooring

Staircase: Granite / vitrified tiles

Lift Lobby & Corridors: Granite / vitrified tiles (Upper floors)

APARTMENT UNITS - FLOORING

Living / Dining / Family / Foyer: Large size vitrified tiles

Master Bedroom: Laminate wooden flooring

Other Bedrooms: Vitrified tiles

Balcony / Deck: Matt finished vitrified tiles

Kitchen & Utility: Large size vitrified tiles

Master Bedroom Toilet: Designer tile flooring

Other Toilets: Anti-skid ceramic tiles

KITCHEN

Provision for modular kitchen

BATHROOMS

CP & Sanitary Fittings: Bathline / Kohler or equivalent

DOORS & WINDOWS

Main Door to the Apartment: Teakwood frame with designer shutter

Bedroom & Bathroom Doors: Pre-engineered frames / Pre-engineered shutters

Balcony Door: UPVC / Aluminium 3 track with bug screen

Windows: UPVC / Anodised Aluminium with glazing, sliding type with bug screen

PAINTING & FINISHES

External: External texture paint with exterior emulsion

Internal Walls & Ceilings: Acrylic emulsion paint

AIR-CONDITIONING

Provision for split air-conditioning

POWER SUPPLY

2-Bedroom Apartment: 4 kW

3-Bedroom Apartment: 5 kW

4-Bedroom Apartment: 6 kW

DG BACKUP

2-Bedroom Apartment: 2 kW

3-Bedroom Apartment: 3 kW

4-Bedroom Apartment: 5 kW

LIFTS

2 passenger lifts in each block

SPECIFICATIONS FOR 4 BHK UNITS

Living / Dining / Family / Foyer: Engineered Marble - Dantea

Master Bedroom: Laminate wooden flooring - Meister Oak

Other Bedrooms: Laminate wooden flooring - Meister Oak

Balcony / Deck: 100 mm wide deck tiles

Master Bedroom Toilet: Ceramic tile cladding up to false ceiling

Other Toilets and Powder Room: Ceramic tile cladding up to false ceiling

MULTIPLE DOMAINS. SINGLE-MINDED COMMITMENT.

Brigade is one of India's leading developers with over three decades of experience in building positive experiences and also transforming the skyline of cities in South India namely Bangalore, Mysore, Mangalore, Hyderabad, Chennai and Kochi with its developments across Residential, Office, Retail, Hospitality and Education sectors.

Brigade's residential portfolio includes penthouses, villas, premium residences, luxury apartments, value homes, independent living for seniors and award winning fully integrated lifestyle enclaves & townships. Brigade is among the few developers who also enjoy a reputation of developing Grade A commercial properties. The World Trade Center Bangalore and Kochi, Software and IT parks, SEZs and stand-alone offices have top international clients operating from them. Brigade's retail projects include Orion Mall at Brigade Gateway, Orion East Mall at Banaswadi and the upcoming Orion Mall at OMR. Brigade's hospitality offerings include star hotels across South India, recreational clubs and convention centres, Celebrations Catering and Events and The Baking Company,

a unique patisserie focusing on freshly baked healthy products in Bangalore. Brigade has completed over 250 buildings amounting to 40 million Sq.ft. in residential, office, retail and hospitality sectors across 7 cities.

The Group has been socially responsible and has vastly contributed to society by redeveloping the Sangolli Rayanna Park and the Shri Nadaprabhu Kempegowda Playground in Malleswaram, Bangalore, constructing a Skywalk across Dr. Rajkumar Road, rejuvenation of Sithampalya Lake in Whitefield etc. This responsible attitude and innovative mindset combined with uncompromising quality of the projects over the years has made us a reputed brand.

The Group has also been consistently ranked among the 100 Best Places to Work in India for 8 years in a row. The awards and recognition received by the Group across various categories serve as a testimony to Brigade as a proven brand, well established and trustworthy coupled with excellent customer service and impeccable build quality.



Great Place To Work 2018

Brigade has been recognised for being amongst India's Best Workplaces in Real Estate, at the 'Great Place To Work For 2018 Awards'

Brigade Group

Won the 'Real Estate Luminary Award' for Exemplary contribution to Real Estate at the Times Business Awards 2018

Brigade was recognised as one of India's Top Builders at the Construction World Architects & Builders Award 2018

Brigade was recognised as one of Bengaluru's Hot 50 Brands at the Brand Summit & Hot Brands 2018 by Paul Writer

Brigade Orchards

Won the 'Smart Township Project of the Year' Award at the 6th Annual Siliconindia Bengaluru Real Estate Awards 2018

Won the 'Integrated Township of the Year' award at the Realty Plus Excellence Awards South 2018

Brigade Exotica

Won the Best Residential Project at the CIA World Construction & Infra Awards 2018

Brigade Palmgrove, Mysuru

Won the Premium Villa Project of the Year at the NDTV Property Awards 2018

Won in the 'Villas & Row Houses' category at the CREDAI Karnataka's CARE Awards 2017



UPGRADE TO BRIGADE, reach us on 1800 102 9977 • email: salesenquiry@brigadegroup.com

Site Marketing Office:
Brigade LakeFront, EPIP,
Whitefield (near Keys Hotel),
Bengaluru.

Registered & Corporate Office:
29th & 30th Floor,
WTC Bangalore@Brigade Gateway Campus,
Dr. Rajkumar Road, Malleswaram-Rajajinagar,
Bengaluru 560 055
Ph: +91-80-41379200 • Fax: +91-80-22210784

Dubai:
Brigade Enterprises Ltd.,
708, Atrium Centre, Bank Street, Bur Dubai
Ph: +971 4 355 5504 | Fax: +971 4 355 5541
dubaisales@brigadegroup.com

Offices also at: **CHENNAI • CHIKMAGALURU • HYDERABAD • MANGALURU • MYSURU**