



UNIT PLANS

1 BHK

593 SFT

1.5 BHK

759 SFT

2 BHK

1035 SFT






1023 SFT

1027 SFT

The information depicted herein viz., master plans, furniture layout, fittings, illustrations, specifications, designs, dimensions, rendered views, colours, amenities and facilities etc., are subject to change without notifications as may be required by the relevant authorities or the developer's architect, and cannot form part of an offer or contract. Whilst every care is taken in providing this information, the Developer cannot be held liable for variations. All illustrations and pictures are artist's impression only. The information is subject to variations, additions, deletions, substitutions and modifications as may be recommended by the company's architect and/or the relevant approving authorities. The Developer is wholly exempt from any liability on account of any claim in this regard. (1 square metre = 10.764 square feet). E & OE.



UNIT DISTRIBUTION PLAN

LEGEND		SBA
	TYPE - A 1 BHK UNIT	593 SFT
	TYPE - B 1.5 BHK UNIT	759 SFT
	TYPE - C 2 BHK UNIT	1035 SFT
	TYPE - D 2 BHK UNIT	1023 SFT
	TYPE - E 2 BHK UNIT	1027 SFT

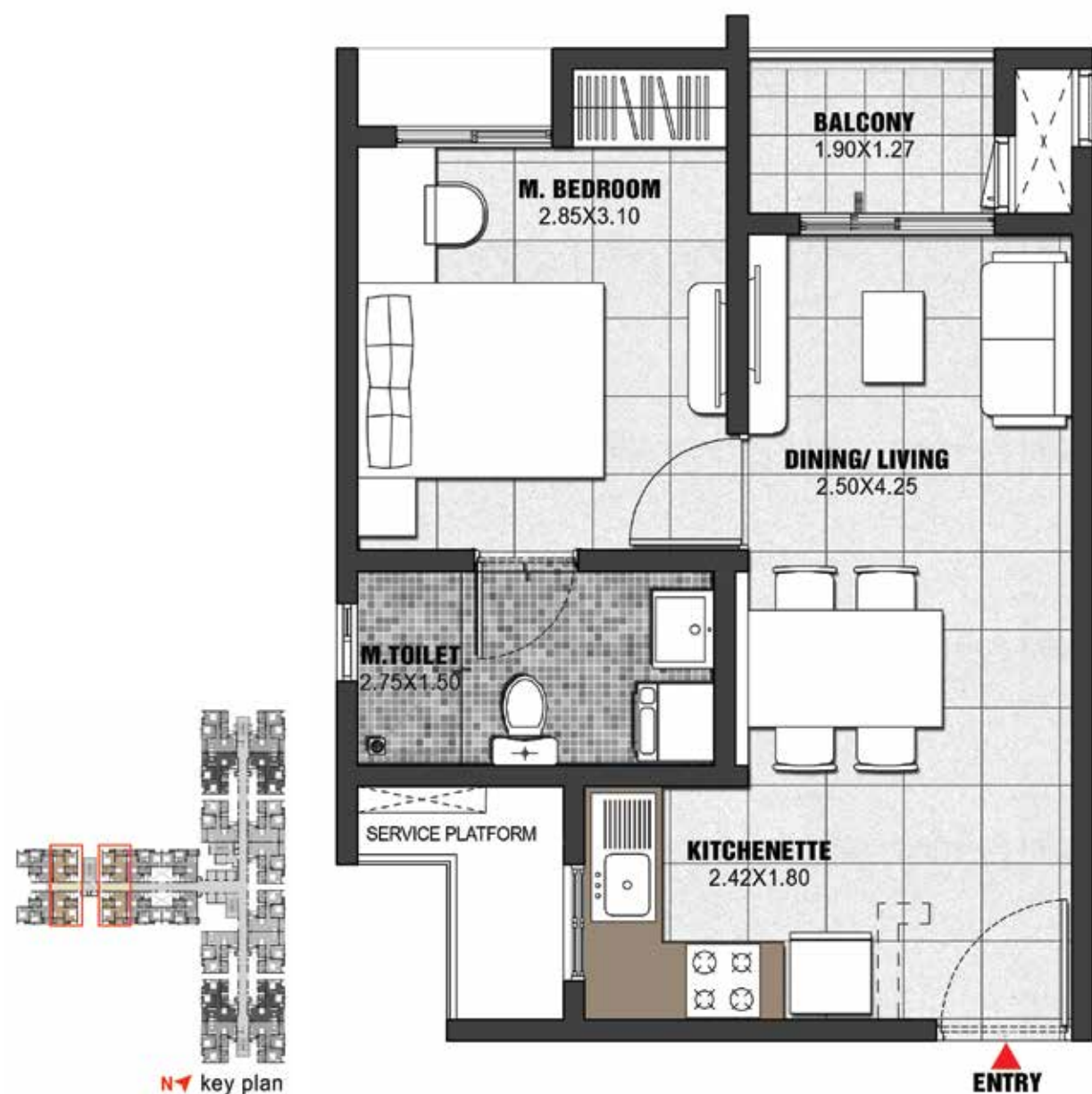


The information depicted herein viz., master plans, furniture layout, fittings, illustrations, specifications, designs, dimensions, rendered views, colours, amenities and facilities etc., are subject to change without notifications as may be required by the relevant authorities or the developer's architect, and cannot form part of an offer or contract. Whilst every care is taken in providing this information, the Developer cannot be held liable for variations. All illustrations and pictures are artist's impression only. The information is subject to variations, additions, deletions, substitutions and modifications as may be recommended by the company's architect and/or the relevant approving authorities. The Developer is wholly exempt from any liability on account of any claim in this regard. (1 square metre = 10.764 square feet). E & OE.



## TYPICAL UNIT PLAN

1-Bedroom Unit - Type A | 1 Bedroom + 1 Toilet



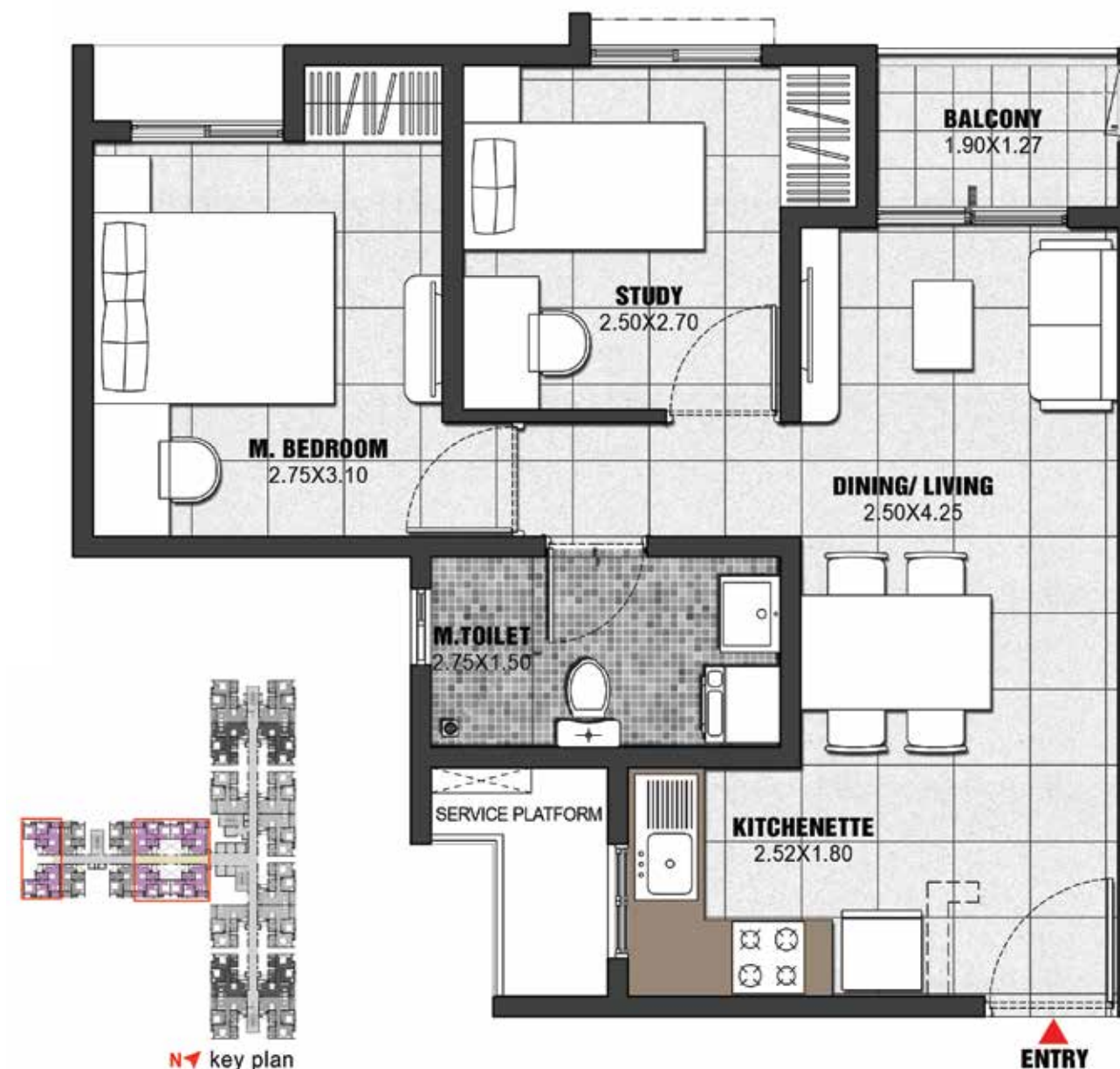
SUPER BUILT-UP AREA	CARPET AREA	BALCONY CARPET AREA
593 Sq.ft. / 55.09 Sq.m.	351 Sq.ft. / 32.62 Sq.m.	23 Sq.ft. / 2.10 Sq.m.

The information depicted herein viz., master plans, furniture layout, fittings, illustrations, specifications, designs, dimensions, rendered views, colours, amenities and facilities etc., are subject to change without notifications as may be required by the relevant authorities or the developer's architect, and cannot form part of an offer or contract. Whilst every care is taken in providing this information, the Developer cannot be held liable for variations. All illustrations and pictures are artist's impression only. The information is subject to variations, additions, deletions, substitutions and modifications as may be recommended by the company's architect and/or the relevant approving authorities. The Developer is wholly exempt from any liability on account of any claim in this regard. (1 square metre = 10.764 square feet). E & OE.



## TYPICAL UNIT PLAN

1.5-Bedroom Unit - Type B | 1 Bedroom + 1 Toilet



SUPER BUILT-UP AREA	CARPET AREA	BALCONY CARPET AREA
759 Sq.ft. / 70.56 Sq.m.	462 Sq.ft. / 42.91 Sq.m.	23 Sq.ft. / 2.10 Sq.m.

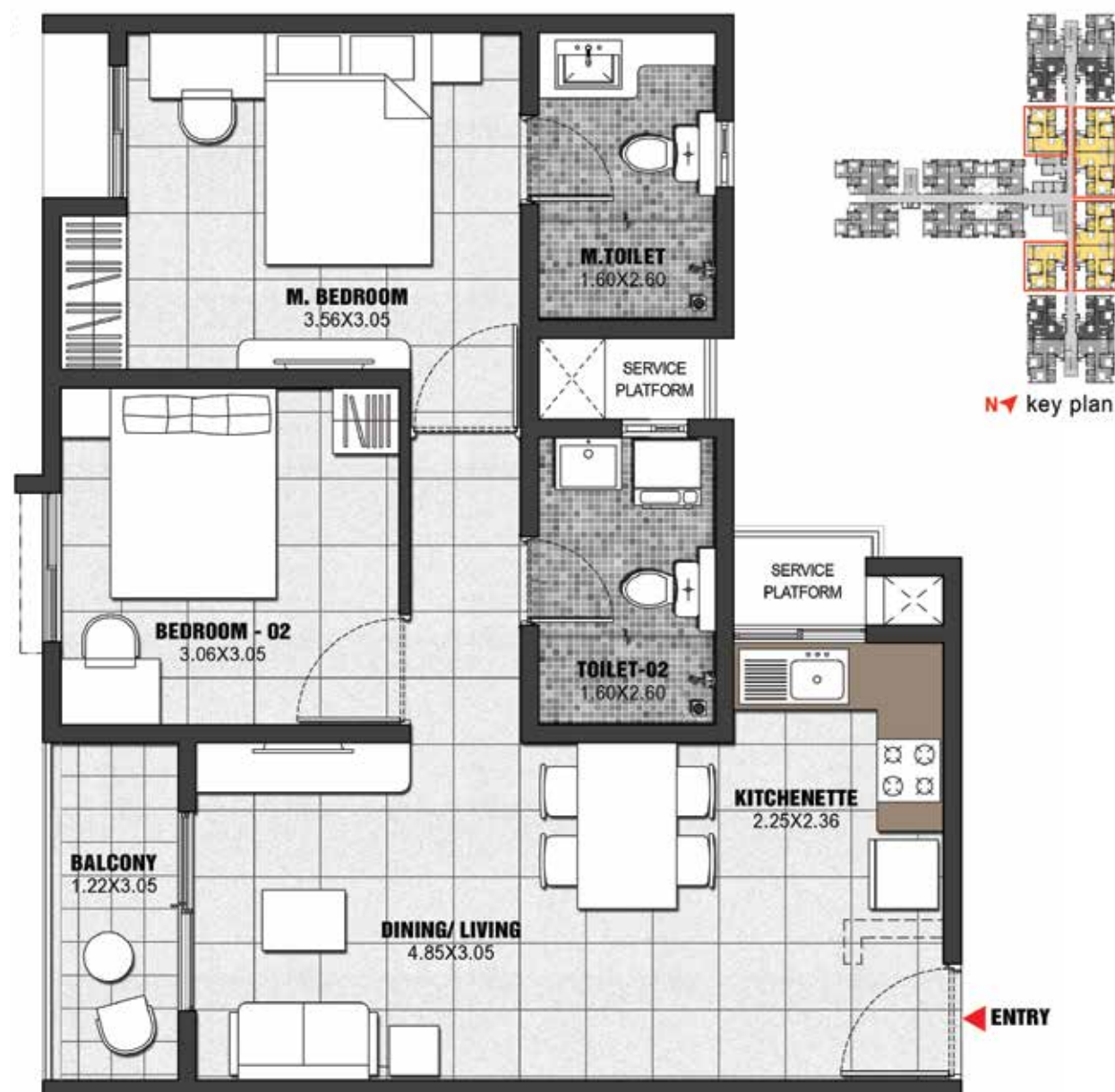
The information depicted herein viz., master plans, furniture layout, fittings, illustrations, specifications, designs, dimensions, rendered views, colours, amenities and facilities etc., are subject to change without notifications as may be required by the relevant authorities or the developer's architect, and cannot form part of an offer or contract. Whilst every care is taken in providing this information, the Developer cannot be held liable for variations. All illustrations and pictures are artist's impression only. The information is subject to variations, additions, deletions, substitutions and modifications as may be recommended by the company's architect and/or the relevant approving authorities. The Developer is wholly exempt from any liability on account of any claim in this regard. (1 square metre = 10.764 square feet). E & OE.





## TYPICAL UNIT PLAN

2-Bedroom Unit - Type C | 2 Bedrooms + 2 Toilets



SUPER BUILT-UP AREA	CARPET AREA	BALCONY CARPET AREA
1035 Sq.ft. / 96.19 Sq.m.	625 Sq.ft. / 58.08 Sq.m.	36 Sq.ft. / 3.38 Sq.m.

The information depicted herein viz., master plans, furniture layout, fittings, illustrations, specifications, designs, dimensions, rendered views, colours, amenities and facilities etc., are subject to change without notifications as may be required by the relevant authorities or the developer's architect, and cannot form part of an offer or contract. Whilst every care is taken in providing this information, the Developer cannot be held liable for variations. All illustrations and pictures are artist's impression only. The information is subject to variations, additions, deletions, substitutions and modifications as may be recommended by the company's architect and/or the relevant approving authorities. The Developer is wholly exempt from any liability on account of any claim in this regard. (1 square metre = 10.764 square feet). E & OE.



## TYPICAL UNIT PLAN

2-Bedroom Unit - Type D | 2 Bedrooms + 2 Toilets



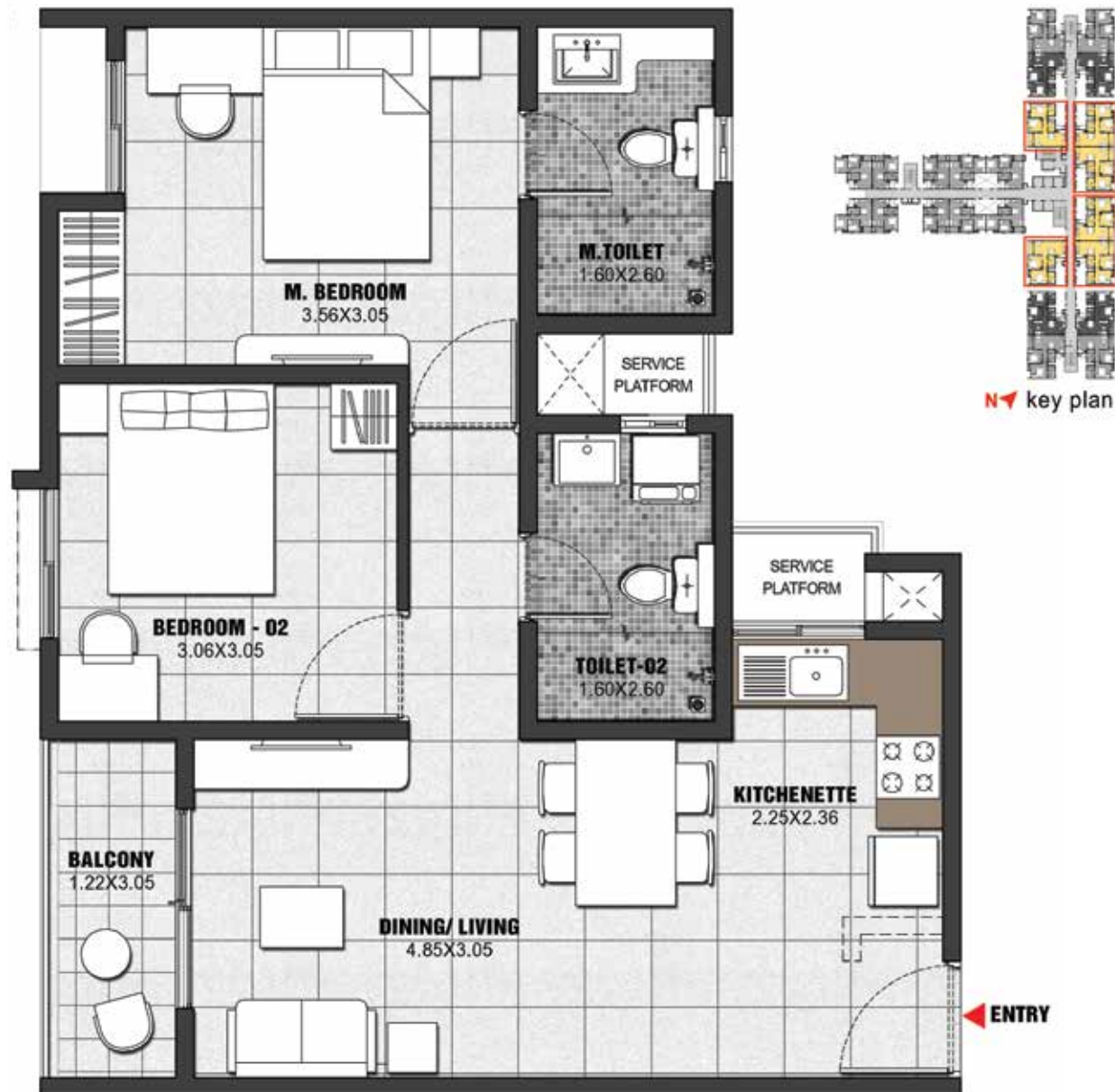
SUPER BUILT-UP AREA	CARPET AREA	BALCONY CARPET AREA
1023 Sq.ft. / 95.06 Sq.m.	618 Sq.ft. / 57.45 Sq.m.	36 Sq.ft. / 3.38 Sq.m.

The information depicted herein viz., master plans, furniture layout, fittings, illustrations, specifications, designs, dimensions, rendered views, colours, amenities and facilities etc., are subject to change without notifications as may be required by the relevant authorities or the developer's architect, and cannot form part of an offer or contract. Whilst every care is taken in providing this information, the Developer cannot be held liable for variations. All illustrations and pictures are artist's impression only. The information is subject to variations, additions, deletions, substitutions and modifications as may be recommended by the company's architect and/or the relevant approving authorities. The Developer is wholly exempt from any liability on account of any claim in this regard. (1 square metre = 10.764 square feet). E & OE.



## TYPICAL UNIT PLAN

2-Bedroom Unit - Type E | 2 Bedrooms + 2 Toilets



SUPER BUILT-UP AREA	CARPET AREA	BALCONY CARPET AREA
1027 Sq.ft. / 95.44 Sq.m.	620 Sq.ft. / 57.56 Sq.m.	36 Sq.ft. / 3.38 Sq.m.

The information depicted herein viz., master plans, furniture layout, fittings, illustrations, specifications, designs, dimensions, rendered views, colours, amenities and facilities etc., are subject to change without notifications as may be required by the relevant authorities or the developer's architect, and cannot form part of an offer or contract. Whilst every care is taken in providing this information, the Developer cannot be held liable for variations. All illustrations and pictures are artist's impression only. The information is subject to variations, additions, deletions, substitutions and modifications as may be recommended by the company's architect and/or the relevant approving authorities. The Developer is wholly exempt from any liability on account of any claim in this regard. (1 square metre = 10.764 square feet). E & OE.

## SPECIFICATIONS

### STRUCTURE

Pre-cast concrete panels for walls & slabs

### COMMON AREA - FLOORING

**Waiting lounge, reception, GF lobby & lift lobby:**

Marble/Granite/ Vitrified Tiles

**Staircases:**

Concrete step tiles/Vitrified tiles / Epoxy coating for precast stairs (from 1st floor)

**Other lift lobby and corridors (upper):**

Vitrified tiles (Matte Finish)

### APARTMENT UNITS - FLOORING

**Living, dining, family & foyer:**

Vitrified tiles

**Master bedroom, other bedrooms & kitchenette:**

Vitrified tiles

**Balcony / deck:**

Matt finish tiles

**Master bedroom toilet & common toilet:**

Anti-skid ceramic tiles

### WALL DADO

**Master bedroom toilet & common toilet:**

Ceramic tile cladding up to false ceiling height.

### KITCHEN

**Counter:**

Provision for modular kitchen

**Plumbing & electrical:**

Plumbing point provision for water purifier.

Electrical points provision for water purifier, refrigerator, hob, chimney, mixer/grinder, microwave oven.

### WINDOWS

UPVC / Anodised Aluminium with mosquito mesh provision and safety grill.

### DOORS

**Main entry door to unit:**

Flush shutter with both side laminate and architrave

**Bedroom doors:**

Engineered & treated hardwood frame & particle board with HDF skin and architrave

**Toilet door:**

Engineered & treated hardwood frame, shutter laminated both sides and architrave

**Balcony door:**

UPVC / Aluminium with bug screen.

**Shaft door:**

MS door frame with mild sheet shutter

### TOILETS

**CP Fittings:**

Jaquar/Ess Ess/ Essco or equivalent

**Sanitary fixtures:**

Wall mounted white EWC (Hindware/Parryware/Cera or equivalent) with exposed flush tank of standard make including health faucet.

**Accessories:**

Towel rod

**False Ceiling:**

Grid ceiling calcium silicate or equivalent

### PAINTING & FINISHES

**External/Exterior finishes:**

Combination of external texture paint with external grade emulsion

**Internal ceilings & common area:**

Oil bound distemper or emulsion

**Unit ceiling:**

Acrylic emulsion paint

**Internal walls, common area & lift lobby:**

Emulsion paint

Staircase, utility area and service area:

Oil bound distemper

**Basement:**

Cement paint

**Unit walls:**

Acrylic emulsion paint

**Steel works:**

Synthetic enamel paint

**Woodwork:**

Enamel paint

### ELECTRICAL

1 Bedroom Apartment: 3 KW

1.5 Bedroom Apartment: 4 KW

2 Bedroom Apartment: 4 KW

Modular switches: Anchor or equivalent make.

### DG BACKUP

1 Bedroom Apartment: 1.5 KW

1.5 Bedroom Apartment: 2 KW

2 Bedroom Apartment: 2 KW

Emergency power for lifts, pumps & lighting in common areas – 100%

### VERTICAL TRANSPORTATION

Lifts: OTIS / Kone or equivalent

### SECURITY SYSTEM & AUTOMATIONS

Provision for intercom facility & CCTV as per design

The information depicted herein viz., master plans, furniture layout, fittings, illustrations, specifications, designs, dimensions, rendered views, colours, amenities and facilities etc., are subject to change without notifications as may be required by the relevant authorities or the developer's architect, and cannot form part of an offer or contract. Whilst every care is taken in providing this information, the Developer cannot be held liable for variations. All illustrations and pictures are artist's impression only. The information is subject to variations, additions, deletions, substitutions and modifications as may be recommended by the company's architect and/or the relevant approving authorities. The Developer is wholly exempt from any liability on account of any claim in this regard. (1 square metre = 10.764 square feet). E & OE.